



Siif FLEX 80

IRON - CASTING HANDLED

FINISHING ROBOTIC CELL

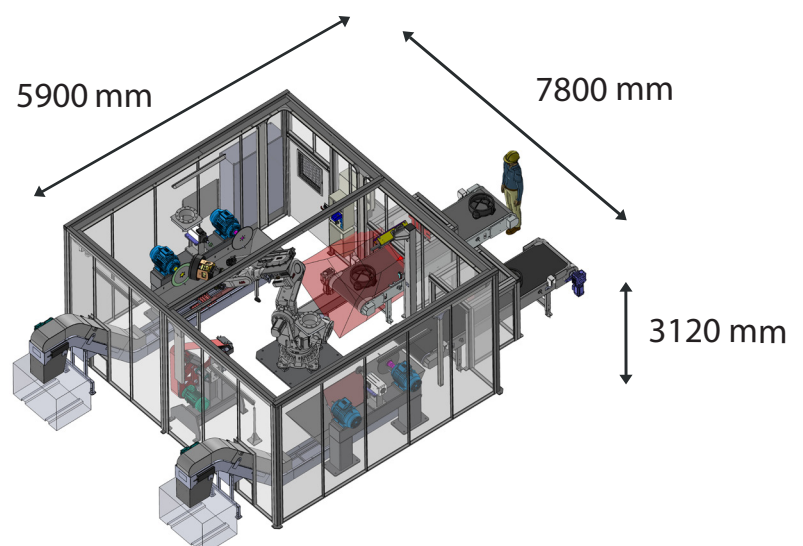
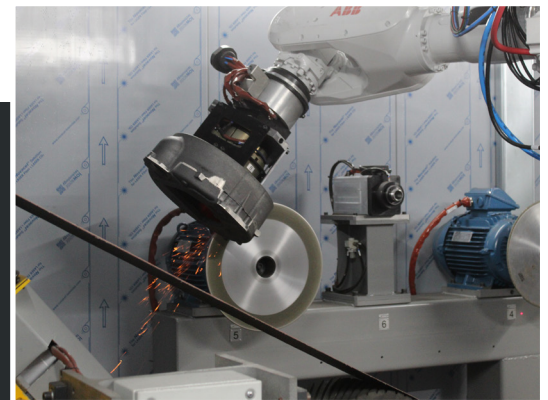
Max. casting dimensions 800 mm x 800 mm x Ht 550 mm
Max. casting weight 80 kg

- 1 ABB IRB 6700-235 kg Robot
- 1 Pneumatic gripper + automatic loader system
- 1 Soundproof cabin 7800 mm x 5900 mm x 3120 mm
- 1 Safety screen outside the cell
- 1 Vision system
- 1 Electrical cabinet with operator interface, SIEMENS PLC and vision display unit

1 Tool rack with :

- 1 Cutting spindle 22 kW - 3000 rpm
- 1 Diamond coated cutting disc Ø 490 mm
- 1 Grinding spindle 22 kW - 3000 rpm
- 1 Diamond coated bevelled grinding wheel Ø 500 mm
- 1 Finishing spindle 8,5 kW - 12000 rpm with different tools :
- 2 Siif finishing tools : Ø 70 mm et Ø 50 mm
- 1 Siif conical diamond finishing spindle Ø 20 mm

- 1 Siif finishing sand grinding belt - Width : 200 mm
- 2 Belt conveyors (loading + unloading)



Siif S.A.S
130 rue Léonard de Vinci
56850 Caudan - FRANCE

www.siif.fr



Siif FLEX 80

STEEL - CASTING HANDLED

FINISHING ROBOTIC CELL

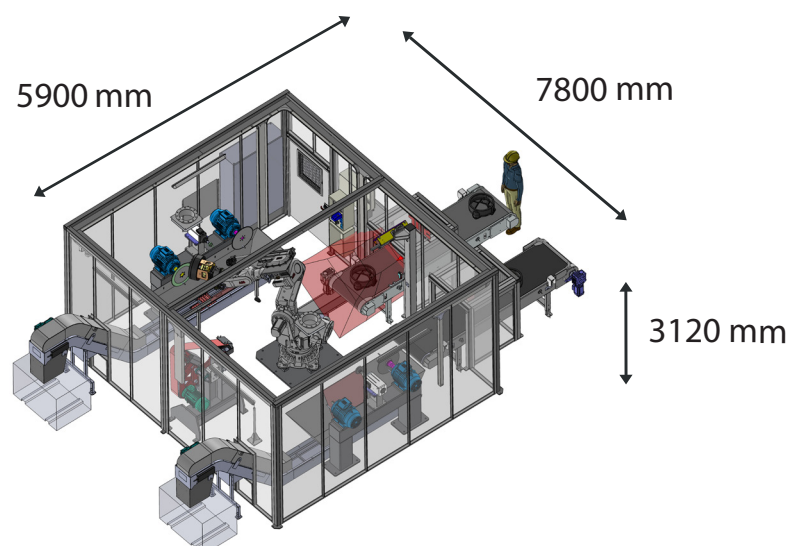
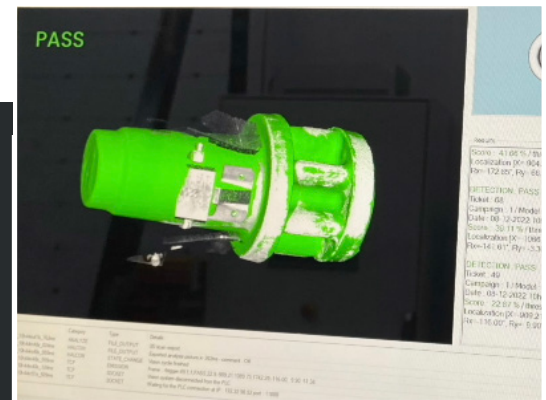
Max. casting dimensions 800 mm x 800 mm x 550 mm
Max. casting weight 80 kg

- 1 ABB IRB 6700-235 kg Robot
- 1 Pneumatic gripper + automatic loader system
- 1 Soundproof cabin 7800 mm x 5900 mm x 3120 mm
- 1 Safety screen outside the cell
- 1 Vision system
- 1 Electrical cabinet with operator interface, SIEMENS PLC and vision display unit

1 Tool rack with :

- 1 Cutting spindle 22 kW - 3000 rpm
- 1 Diamond coated organic cutting disc Ø 500 mm
- 1 Grinding spindle 22 kW - 3000 rpm
- 1 Diamond coated organic grinding wheel Ø 300 mm
- 1 Finishing spindle 14 kW - 6000 rpm
- 1 Organic grinding spindle Ø 150 mm

- 1 Siif finishing sand grinding belt - Width : 200 mm
- 2 Belt conveyors (loading + unloading)



Siif S.A.S
130 rue Léonard de Vinci
56850 Caudan - FRANCE

www.siif.fr